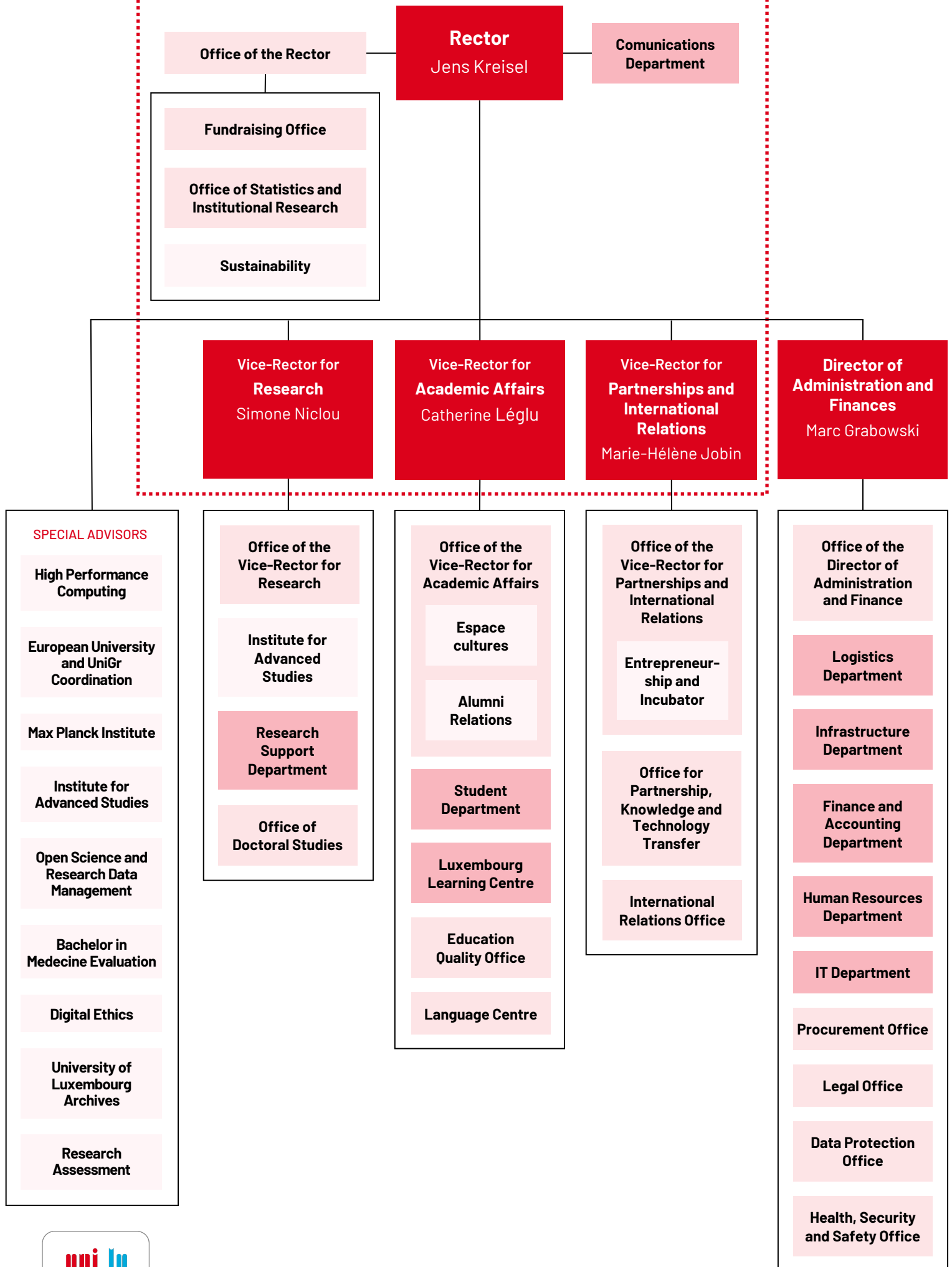


RECTORATE



SPECIAL ADVISORS

High Performance Computing

European University and UniGr Coordination

Max Planck Institute

Institute for Advanced Studies

Open Science and Research Data Management

Bachelor in Medecine Evaluation

Digital Ethics

University of Luxembourg Archives

Research Assessment

Office of the Vice-Rector for Research

Institute for Advanced Studies

Research Support Department

Office of Doctoral Studies

Office of the Vice-Rector for Academic Affairs

Espace cultures

Alumni Relations

Student Department

Luxembourg Learning Centre

Education Quality Office

Language Centre

Office of the Vice-Rector for Partnerships and International Relations

Entrepreneurship and Incubator

Office for Partnership, Knowledge and Technology Transfer

International Relations Office

Office of the Director of Administration and Finance

Logistics Department

Infrastructure Department

Finance and Accounting Department

Human Resources Department

IT Department

Procurement Office

Legal Office

Data Protection Office

Health, Security and Safety Office