



Support the Parkinson's Research Fund

Parkinson's disease affects more than 10 million people worldwide, making it one of the world's most pressing health challenges. The disease profoundly impacts speech, mobility, and sleep, while its mental health consequences further amplify the burden on both patients and their families. As one of the fastest-growing neurodegenerative disorders, the number of Parkinson's cases is expected to double in cases by 2050.

The University of Luxembourg aims to create a world-renowned center for Parkinson's research. Most Parkinson's cases arise from complex interactions between genetic and environmental factors. Drawing on a range of life sciences expertise, our researchers study biomarkers that may predict Parkinson's risk, onset, and progression. Using clinical, imaging, and biological research, they aim to advance prevention, diagnosis, and treatment. With your support, we can advance our understanding of the disease and move closer to finding a cure.



Key research areas driving progress

Nationwide cohort for personalised medicine

Starting in 2015, we have established a cohort of more than 1,800 participants of patients and control subjects, who have contributed vital clinical data and biosamples to our research. By working closely with patients, we aim to translate research into therapies that improve their quality of life.

Using big data for medical breakthroughs

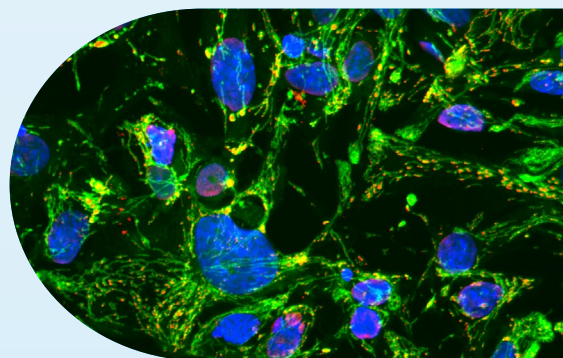
Our researchers use bioinformatics and machine learning to uncover insights into Parkinson's disease. By analyzing large data sets, they identify biomarkers, explore disease pathways, and screen molecules with potential therapeutic value. This work turns complex data into meaningful advancements in patient care.

Improving quality of life for patients and their families

To improve therapies and care, we established a professional network of health care practitioners – ParkinsonNet Luxembourg – in 2017. It promotes research-backed treatments and offers patients and families valuable resources. Recognising its impact, the Government of Luxembourg has now fully integrated the programme into the national healthcare system, making it a lasting success story.

New digital tools for patients

Researchers at the LCSB are developing wearable sensors and other digital medical devices that enable patients to track symptoms and share data with their healthcare teams. These tools support patient care and generate crucial data for ongoing research.





Every breakthrough brings us closer to better treatments and, ultimately, a cure for Parkinson's disease. Your generous contributions have been essential in driving research forward. With your continued support, we can accelerate progress and improve the lives of people affected by Parkinson's disease, giving them new hope for a brighter future.

Prof. Anne Grünewald

*Principal Investigator at the LCSB
FNR ATTRACT Fellow
University of Luxembourg*

Join us in the pursuit of a cure

Your support is crucial to our efforts to understand, prevent, and cure Parkinson's disease. By contributing to the Parkinson's Research Fund, you can directly impact the development of diagnostic tools, innovative therapies, and comprehensive care networks. Together, we can improve lives in Luxembourg and beyond.



How to donate

Any amount below €10,000 can be donated directly to the University of Luxembourg. We advise making any donations above €10,000 to the University of Luxembourg Foundation.

Donations less than €10,000

University of Luxembourg

IBAN: LU19 0019 2955 5270 5000

BIC: BCEELULL

Donations more than €10,000

University of Luxembourg Foundation

IBAN: LU34 0019 4055 4574 9000

BIC: BCEELULL

Please include the communication **PARKINSON'S FUND** in your transfer and an email address if you would like to receive updates. A tax receipt is issued by the University of Luxembourg for every donation received.

