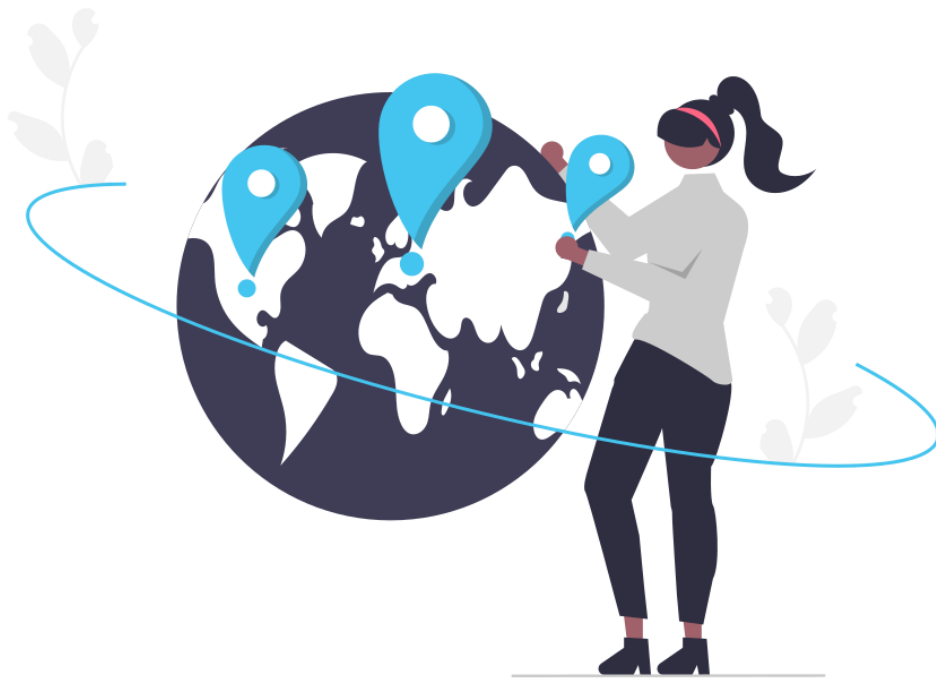


Bachelor en Cultures Européennes (BCE)

Incoming Exchange Students



Course Catalogue

Summer Semester – Semestre d'été – Sommersemester

2022/2023

IMPRINT

PUBLISHER: Bachelor en Cultures Européennes
Faculty of Language and Literature, Humanities, Arts and Education
UNIVERSITY OF LUXEMBOURG
Campus Belval
2, avenue de l'Université
L-4365 Esch-sur-Alzette

CONTACT: Myrna TUMELERO
Study Programme Coordination and Incoming Mobility Adviser
myrna.tumelero@uni.lu

Table of Contents

Welcome to the Bachelor en Cultures Européennes	1
Before you choose your courses	2
Find out more about the BCE.....	2
Common European Framework of Reference for Languages (CEFR).....	3
General Course Offer.....	5
English Studies	5
Etudes françaises.....	6
Germanistik.....	6
Lëtzebuenger Linguistik a Literatur	7
Histoire / Geschichte / History	7
Philosophie	8
European Cultures Modules.....	9
Language Courses.....	11
English Language Courses.....	11
Cours de langue française	11
Deutsche Sprachkurse.....	11

Welcome to the Bachelor en Cultures Européennes

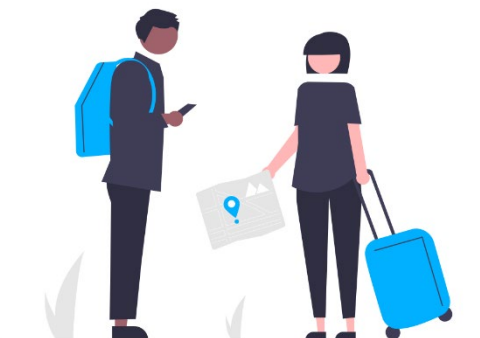
We are delighted to welcome you to your semester abroad in the Bachelor en Cultures Européennes (BCE) at the University of Luxembourg. The BCE is an interdisciplinary programme that brings together students and staff from different fields of study, such as History, Philosophy, German (Germanistik), French (Etudes françaises), Lëtzebuergger Linguistik a Literatur (Luxembourgish Linguistics and Literature) or English Studies. In this sense, your exchange is more than a classic exchange: if you wish to, you can decide to choose courses from other disciplines and to expand the scope of your degree by exploring interdisciplinary approaches to European cultures and various perspectives on Europe. Before you do so, please make sure you check whether your home university will validate and credit these courses!

The BCE's **multilingual spirit and structure** echo prevailing language practices in Luxembourg, where a variety of languages are used alongside the national language, Luxembourgish. In the BCE, most courses are taught in German, French, or English, or in various combinations thereof, but we also have courses that are taught in Luxembourgish (Luxembourgish literatures and culture), and we offer introductions to Italian, Portuguese literatures and cultures (taught in French). In keeping with its multilingual character and approach, the BCE promotes **diversity and interdisciplinarity**. Indeed, our students are encouraged to venture beyond the scope of their main field and to acquire both disciplinary and interdisciplinary skills. This applies to you too, while you are studying with us, and if you are interested in speaking other languages, don't hesitate and don't worry about 'making mistakes' in general conversations or in class discussions! We all do, but we are interested in exchanging ideas and perspective. Don't let language get in the way!

We encourage you to make the most of this exceptional opportunity and to supplement your disciplinary training with the diverse perspectives to be gained from our varied and wide-ranging offer of interdisciplinary courses.

We wish you a good semester at the University of Luxembourg and every success in your studies.

Your BCE Team



Before you choose your courses

1. Please note that **some of the information contained in this catalogue might be subject to slight changes** at the beginning of the semester in February 2023, and that some of the courses you choose may no longer be on offer. Should this be the case, you will be able to update your learning agreement.
2. Make sure to read the course descriptions on the [University Website](#).
3. Make sure you check the schedules – you do not want to enroll in two classes taking place at the same time.
4. **Make sure you check the language requirements for each course.** We want you to enjoy your stay at the University of Luxembourg, and in this context, language matters. Enrolling in classes for which you do not have the necessary language skills can cause complications.
5. **Some of our courses are bi- or trilingual.** If more than one language is listed, the course will be taught in a combination of those languages. In some cases, assessment tasks may be submitted in another language, but this depends on course requirements.
6. **We reserve places for incoming exchange students, but the number of places available in our courses is limited.** Make sure you check our course catalogue for possible alternatives. You will be able to update your learning agreement once your course enrolment has been finalised.

Find out more about the BCE

To prepare for your stay at the University of Luxembourg, please check out the *BCE Study Guide for Incoming Exchange Students*. This provides information on rules and regulations, enrolment and exam registration, attendance, what to expect in terms of assessment and credits, and how to complete your courses and obtain ECTS credits. The document is quite long, but it will have answers to most of your questions!



Common European Framework of Reference for Languages (CEFR)

Getting used to a new academic setting is both exciting and demanding, and one of the challenges you may encounter relates to language requirements. The [Common European Framework of Reference for Languages](#) can help you to evaluate your own language skills and the competences you will need to complete our courses.

Proficient User	C2	Can understand with ease virtually everything heard or read. Can summarise information from different spoken and written sources, reconstructing arguments and accounts in a coherent presentation. Can express him/herself spontaneously, very fluently and precisely, differentiating finer shades of meaning even in more complex situations.
	C1	Can understand a wide range of demanding, longer texts, and recognise implicit meaning. Can express him/herself fluently and spontaneously without much obvious searching for expressions. Can use language flexibly and effectively for social, academic and professional purposes. Can produce clear, well-structured, detailed text on complex subjects, showing controlled use of organisational patterns, connectors and cohesive devices.
Independent User	B2	Can understand the main ideas of complex text on both concrete and abstract topics, including technical discussions in his/her field of specialisation. Can interact with a degree of fluency and spontaneity that makes regular interaction with native speakers quite possible without strain for either party. Can produce clear, detailed text on a wide range of subjects and explain a viewpoint on a topical issue giving the advantages and disadvantages of various options.
	B1	Can understand the main points of clear standard input on familiar matters regularly encountered in work, school, leisure, etc. Can deal with most situations likely to arise whilst travelling in an area where the language is spoken. Can produce simple connected text on topics which are familiar or of personal interest. Can describe experiences and events, dreams, hopes & ambitions and briefly give reasons and explanations for opinions and plans.
Basic User	A2	Can understand sentences and frequently used expressions related to areas of most immediate relevance (e.g. very basic personal and family information, shopping, local geography, employment). Can communicate in simple and routine tasks requiring a simple and direct exchange of information on familiar and routine matters. Can describe in simple terms aspects of his/her background, immediate environment and matters in areas of immediate need.
	A1	Can understand and use familiar everyday expressions and very basic phrases aimed at the satisfaction of needs of a concrete type. Can introduce him/herself and others and can ask and answer questions about personal details such as where he/she lives, people he/she knows and things he/she has. Can interact in a simple way provided the other person talks slowly and clearly and is prepared to help.

[Global scale - Table 1 \(CEFR 3.3\): Common Reference levels \(coe.int\)](#)

General Course Offer

This course catalogue provides a list of all courses available to incoming exchange students in the Summer Semester 2022/2023 (February-June 2023).

English Studies

Course ID	Course Title	Lecturer	Schedule	Language	Level	ECTS
BCE-ES-201-02	Sociolinguistics	WAGNER Mélanie	Thursday 11.30-13.00	English	B2	4
BCE-ES-201-02	English Literature: A History	STEVAKER Lena	Wednesday 11:30-13:00	English	B2	4
BCE-ES-202-01	Reading and Writing about Literature 2	Conveners : PRÛM Agnès, MILLIM Anne- Marie	Tuesday 9.45-11.15	English	C1	4
BCE-ES-203-01	Grammar 2	DEROEY Katrien	Wednesday 9:45-11:15	English	C1	4
BCE-ES-207-01	Introduction to Poetry	DARINOV Ognyan	Monday, 15.00-16.30	English	C1	4
BCE-ES-406-01	History of the English Language (ca.400-ca.1600)	PÉPORTÉ Pierre	Tuesday 13.15-14.45	English	C1	4
BCE-ES-408-02	Introduction to Literary Theory and Criticism	PRÛM Agnès	Thursday 13.15-14.45	English	C1	4
BCE-ES-408-02	Early Modern Poetry	STEVAKER Lena	Tuesday 15.00-16.30	English	C1	4
BCE-ES-408-03	Victorian Literature	MILLIM Anne- Marie	Wednesday 9.45.11.15	English	C1	4
BCE-ES-409-04	Dragons, Knights, and Pilgrims - Making Sense of Language and Literature in Medieval England	PÉPORTÉ Pierre	Tuesday 9.45.11.15	English	C1	5
BCE-ES-409-05	Language Acquisition (alternates with Phonetics)	DEROEY Katrien	Wednesday 13.15-14.45	English	C1	5
BCE-ES-409-07	Reading Illness	BRANCO Mylène	Tuesday 13.15-14.45	English	C1	5
TBC	Sociolinguistics in Practice	WAGNER Mélanie	Monday 9.45-11.15	English	C1	5
TBC	Irish Literature	GALLACHER James	Tuesday 15:00-16:30	English	C1	5
BCE-ES-206-02	Sociolinguistics Methods and Analysis*	PURSCHKE Christophe	Thursday 9.45-11.15	English / Lëtzebuergesch	B2	4

* This course is shared with the specialisation in Luxembourgish Linguistics and Literature (*Lëtzebuergesch Linguistik a Literatur*). Knowledge of Luxembourgish is not required.

Etudes françaises

Course ID	Course Title	Lecturer	Schedule	Language	Level	ECTS
BCE-FRA-201-02	Panorama de la littérature 2 : du XVIIIe au XXIe siècle (CM)	ROELENS Nathalie	Wednesday 11.30-13.00	Français	C1	4
BCE-FRA-201-03	Sociologie de la littérature	DIRKX Paul	Friday 13.15-16.30 (every 2 weeks)	Français	C1	3
BCE-FRA-202-02	Linguistique française 2: Structuration de la phrase	COLAS-BLAISE Marion	Tuesday 9.45-11.15	Français	C1	4
BCE-FRA-203-02	Techniques d'expression 2: Commentaire composé	ZGOLA Clara (TBC)	Monday 13.15-14.45	Français	C1	3
BCE-FRA-203-03	Initiation aux genres	ABLALI Driss	Thursday 13.15-14.45	Français	C1	4
BCE-FRA-405-03	Champs littéraires 3 : Cultures de la Renaissance - La nouvelle à la Renaissance, miroir de la société	CULLIERE Alain	Wednesday 15.00-16.30	Français	C1	4
BCE-FRA-406-02	Linguistique française 4 : Polyphonie et polyscopie	COLAS-BLAISE Marion	Tuesday 13.15-14.45	Français	C1	4
BCE-FRA-407-02	Théories littéraires 1: Barthes	ROELENS Nathalie	Wednesday 9.45-11.15	Français	C1	4
BCE-FRA-407-03	Champs littéraires 4 : Femmes et autrices	SAINTES Laetitia	Monday 13.15-14.45	Français	C1	4
BCE-FRA-407-04	Linguistique 5: L'Europe médiévale II	MULLER Claire (TBC)	Friday 15.45-17.15	Français	C1	4
BCE-FRA-610-01	Textes et problématiques 2 : Jean Rouaud	FREYERMUTH Sylvie	Monday 15.00-16.30	Français	C1	3
BCE-FRA-610-02	Champs littéraires 5: Fiction	RAUS Tonia	Thursday 13.15-14.45	Français	C1	3
BCE-FRA-610-03	Techniques d'expression 4 : Interaction, énonciation, dialogisme et approche linguistique	PETITJEAN André, FRANCK Thomas (TBC)	FRANCK: Wednesday 16.45-18.15 in FEB, MAR + 12 April PETITJEAN: Monday 13.15-14.45 + Wednesday 13.15-14.45 in May	Français	C1	3

Germanistik

Course ID	Course Title	Lecturer	Schedule	Language	Level	ECTS
BCE-GERM-202-01	Einführung in das Mittelhochdeutsche	BENDHEIM Amélie	Friday 9.45-11.15	Deutsch	C1	4
BCE-GERM-202-03	Werke, Gattungen, Autoren des Mittelhochdeutschen	SIEBURG Heinz	Monday 15.00-16.30	Deutsch	C1	4

Course ID	Course Title	Lecturer	Schedule	Language	Level	ECTS
BCE-GERM-203-01	Literatur des 18. Jahrhunderts: Friedrich Schillers ästhetische Theorie und dramatische Praxis	AMANN Wilhelm	Wednesday 13.15-14.45	Deutsch	C1	4
BCE-GERM-204-03	Angewandte Linguistik	HUEMER Birgit	Tuesday 13.15-14.45	Deutsch	C1	4
BCE-GERM-205-02	Gegenwartsdramatik	BLOCH Natalie	Wednesday 15.00-16.30	Deutsch	C1	4
BCE-GERM-205-03	Angewandte Theatermethoden	WAGNER Andreas	Monday 16.45-18.15	Deutsch	C1	4
BCE-GERM-206-02	Literatur- und Kulturaustausch	BÖRNCHEN Stefan	Monday 11.30-13.00	Deutsch	C1	4
BCE-GERM-206-03	Theorie der Interkulturalität	HEIMBÖCKEL Dieter	Wednesday 16.45-18.15	Deutsch	C1	4
BCE-GERM-207-01	Mediengeschichte	MEIN Georg	Thursday 13.15-14.45	Deutsch	C1	4
BCE-GERM-207-05	Gattungen, Werke, Autoren der NDL	REIDENBACH Christian	Tuesday 15.00-16.30	Deutsch	C1	4
BCE-GERM-207-07	Kulturwissenschaftliche Aspekte der Mediävistik	SIEBURG Heinz	Tuesday 16.45-18.15	Deutsch	C1	4

Lëtzebuenger Linguistik a Literatur

Course ID	Course Title	Lecturer	Schedule	Language	Level	ECTS
BCE-LUX-101-02	Literaturgeschichte: eng thematisch Approche	GLESENER Jeanne	Tuesday 8.00-9.30	Lëtzebuergesch	B2	4
BCE-LUX-102-03	Grammaire I (Morphologie)	DÖHMER Caroline	Friday 8.00- 9.30	Lëtzebuergesch	C1	4
BCE-LUX-103-02	Sprooch an den neie Medien	WAGNER Mélanie	Tuesday 11.30-13.00	Lëtzebuergesch	B2	4
BCE-ES-206-02	Linguistesch Methoden an Analys / Sociolinguistics Methods and Analysis*	PURSCHKE Christophe	Thursday 9.45-11.15	English / Lëtzebuergesch	B2	4

* Dëse Cours gëtt mat der Spezialisatioun an English Studies gedeelt. De Cours gëtt op Englesch gehalen, mee schafft och mat Beispiller aus der Lëtzebuergescher Linguistik.

Histoire / Geschichte / History

Course ID	Course Title	Lecturer	Schedule	Language	Level	ECTS
BCE-HIST-203-01	Critique historique / Historische Quellenkritik	MARGUE Michel, SALEMME Timothy, KUTTING Scott	Wednesday 9.45-11.15	Français, Deutsch, English	B2	4
TBD	Histoire contemporaine/ Zeitgeschichte (SM): Eine Zeitgeschichte der Minett-Region	KREBS Stefan	Thursday 08.00-11.15	Français, Deutsch	B2	8

Course ID	Course Title	Lecturer	Schedule	Language	Level	ECTS
TBD	Histoire contemporaine/ Zeitgeschichte (SM): Le Luxembourg et le colonialisme	BRÜLL Christoph, GOERGEN Kevin	Thursday 08.00-11.15	Français, Deutsch	B2	8
BCE-HIST-207-02	Histoire moderne (CM): Europe in the Early Modern World	WEIS Monique KMEC Sonja	Wednesday 11.30-13.00	English, Français	B2	4
BCE-HIST-212-01	Introduction à la paléographie	SALEMME Timothy	Tuesday 16.45-18.15	Français	B2	4
BCE-HIST-212-02	Historische Karten – Wissen, Macht und Propaganda	UHRMACHER Martin	Monday 13.15-14.45	Deutsch	B2	4
BCE-HIST-212-03	Kunstwerke als historische Quelle	SCHMID Wolfgang	Monday 15.00-16.30	Deutsch	B2	4
BCE-HIST-212-05	Kulturwissenschaftliche Aspekte der Mediävistik	BOESEN Elisabeth	Thursday 13.15-14.45	Deutsch	B2	4
BCE-HIST-405-01	Histoire luxembourgeoise – séminaire Representing the City of Luxembourg	JUNGBLUT Marie-Paule	Monday 13.15-15.45	Français, English	B2	8
BCE-HIST-409-01	Histoire médiévale (CM): Introduction à l'histoire médiévale : pouvoir, culture et société (Ve-XIVe siècles)	MARGUE Michel	Tuesday 8.00-9.30	Français	B2	4
BCE-HIST-605-03	Histoire luxembourgeoise transnationale (2ième partie) / Transnationale Luxemburger Geschichte (2. Teil)	KMEC Sonja	Wednesday 8.00-9.30	Français	B2	4
BCE-HIST-610-04	Historiographie	MARGUE Michel	Tuesday 13.15-14.45	Français	B2	4

Philosophie

Course ID	Course Title	Lecturer	Schedule	Language	Level	ECTS
BCE-PHILO-201-04	Introduction to philosophical methodology	RALEIGH Thomas	Wednesday 13.15-14.45	English	B2	3
BCE-PHILO-201-05	Tutorial accompanying the lecture „Systematic Introduction to Philosophy“	HOFMANN Frank	Monday 16.45-17.30	English	B2	1
BCE-PHILO-202-01	Systematic Introduction to Philosophy	HOFMANN Frank	Monday 11.30-13.00	English	B2	4
BCE-PHILO-202-03	Theory of Knowledge	RALEIGH Thomas	Tuesday 9.45-11.15	English	B2	4
BCE-PHILO-202-04	Introduction to Metaphysics	HOFMANN Frank	Monday 15.00-16.30	English	B2	4
BCE-PHILO-203-02	Introduction à la philosophie politique	SALT Kieran	Wednesday 11.30-13.00	TBC	B2	4
BCE-PHILO-403-04	Philosophische Anthropologie	HOFMANN Frank	Tuesday 11.30-13.00	Deutsch	B2	6

Course ID	Course Title	Lecturer	Schedule	Language	Level	ECTS
BCE-PHILO-403-05	Philosophie du droit	CAMPAGNA Norbert	Monday 13.15-14.45	Français	B2	5
BCE-PHILO-404-05	Geschichte der Philosophie: Moderne II	STURM Holger	Friday 13.15-14.45	Deutsch	B2	4
BCE-PHILO-404-06	History of Modern Philosophy III	STURM Holger	Friday 11.30-13.00	Deutsch	B2	4
BCE-PHILO-603-06	Vertiefungskurs: Kant	BAUER Sabrina	Tuesday 13.15-16.30 (every 2 weeks)	Deutsch	B2	4
BCE-PHILO-605-04	Etude de Kant	SOSOE Lukas	Wednesday 15.00-16.30	Français	B2	4

European Cultures Modules

Course ID	Course Title	Lecturer	Schedule	Language	Level	ECTS
BCE-EU-201-02	Der Ring des Nibelungen: Richard Wagners mythisches Weltendrama	MEIN Georg	Thursday 11.30-13.00	Deutsch	B2	4
BCE-EU-201-03 (TBC)	Europe - East and West	GLAUDIC Josip	Monday 11.30 - 13.00	English	B2	4
BCE-EU-201- (TBC)	Britain and the European Union: Understanding the 'Awkward Partner'	HOWARTH David	Friday 11.30-13.00	English	B2	4
TBD	A Journey through Europe: History and its Heritage	VAN DONKERSGOED Joella	Monday 11.30 - 13.00	English	B2	4
BCE-EU-202-04	Latin pour avancés II : Latin vulgaire	SALEMME Timothy	Tuesday 15.00-16.30	Français	B2	4
BCE-EU-203-02	Grundprobleme von Sprachphilosophie und Zeichentheorie	PURSCHKE Christoph	Thursday 11.30-13.00	Deutsch	B2	4
BCE-EU-205-01	Histoire et esthétique du cinéma : l'art de fabriquer des mondes (en collaboration avec la Cinémathèque)	TORÉ Gian Maria	Monday 11.30-13.00	Français	B2	3
BCE-EU-205-02	Études artistiques et médiatiques	TORÉ Gian Maria	Monday 09.45-11h15	Français	B2	3
BCE-EU-205-04	Le cinéma : histoires, mémoires et regards	LÉGLU Catherine	Thursday 09:45-11:15	Français, English	B2	3
BCE-EU-205-05	Reading film	STEVEKER Lena	Monday 15.00-16.30	English	B2	3
TBD	Graphic novels - comics	BÖRNCHEN Stefan	TBD		B2	3
TBD	Introduction in Art and Music Philosophy	LEHMANN Harry	TBD	English, Deutsch	B2	3

Course ID	Course Title	Lecturer	Schedule	Language	Level	ECTS
BCE-EU-206-01	« Smash the patriarchy » théories et mouvements féministes	PIANARO Enrica / ARTUSO Sandy	Thursday 15.00 - 18.15 (every 2 weeks)	Français, Deutsch	B2	3
BCE-EU-207-01	Littérature italienne II	CICOTTI Claudio	Thursday 15.00-16.30	Français	B2	3
BCE-EU-207-02	Civilisation italienne II	CICOTTI Claudio	Thursday 11.30-13.00	Français	B2	3
BCE-EU-207-03	La chanson italienne, miroir d'un pays en évolution 1	RIZZI Carmela	Tuesday 11.30-13.00	Français	B2	3
BCE-EU-207-04	Culture portugaise II	MARTINS DE CARVALHO Adília	Wednesday 15.00-16.30	Français	B2	3
BCE-EU-207-05	Littérature portugaise II	MARTINS DE CARVALHO Adília	Friday 9.45-11.15	Français	B2	3
BCE-EU-207-06	La chanson italienne, miroir d'un pays en évolution 3	RIZZI Carmela	Friday 11.30-13.00	Français	B2	3
BCE-EU-208-02	Didaktik der Geschichte	RICHARTZ Mike	TBD	Deutsch	B2	3
BCE-EU-208-03	Filmische Repräsentationen von Schule und Lehre: Psychoanalytische Ansätze	WEBER Jean-Marie	Thursday 08.00-09.30	Deutsch	B2	3
	Interdisciplinary seminar : « Genre et société »	KMEC Sonja, ZANAJ Skerdilajda	Tuesday 11.30-13.00	Français English Deutsch	B2	6

Language Courses

The **University of Luxembourg Language Centre (ULLC)** aims to enhance the multilingual skills of students by offering language and communication courses for academic, professional, and general purposes. As places for the language courses are very limited, you need to declare your intent enrol in courses offered by the ULLC by adding them to your initial Learning Agreement. Available places as well as time schedules are managed by the ULLC not the BCE.

To find out more, please check their website: [University of Luxembourg Language Centre](https://www.ullc.lu)

English Language Courses

Course ID	Course Title	Lecturer	Schedule	Language	Target Level	ECTS
0.0.1	Academic English B2	TBC	TBC	English	B2	3
0.0.2	Academic English C1 – Proficiency	TBC	TBC	English	C1	3

Cours de langue française

Course ID	Course Title	Lecturer	Schedule	Language	Target Level	ECTS
0.0.3	Français A1	TBC	TBC	English, Français	A1	3
0.0.4	Français A2	TBC	TBC	Français	A2	3
0.0.5	Français B1	TBC	TBC	Français	B1	3
0.0.6	Français académique B2	TBC	TBC	Français	B2	3
0.0.8	Atelier d'écriture B2 – Writing workshop B2 French	TBC	TBC	English, Français	B2	3
0.0.9	Français C1	TBC	TBC	Français	C1	3

Deutsche Sprachkurse

Course ID	Course Title	Lecturer	Schedule	Language	Target Level	ECTS
0.0.10	Deutsch A1	TBC	TBC	Deutsch	A1	3
0.0.11	Deutsch A2 – Blended Learning	TBC	TBC	English, Deutsch	A2	3
0.0.12	Deutsch B1	TBC	TBC	Deutsch	B1	3
0.0.13	B2 German writing support - Schreibwerkstatt	TBC	TBC	English, Deutsch	B2	3